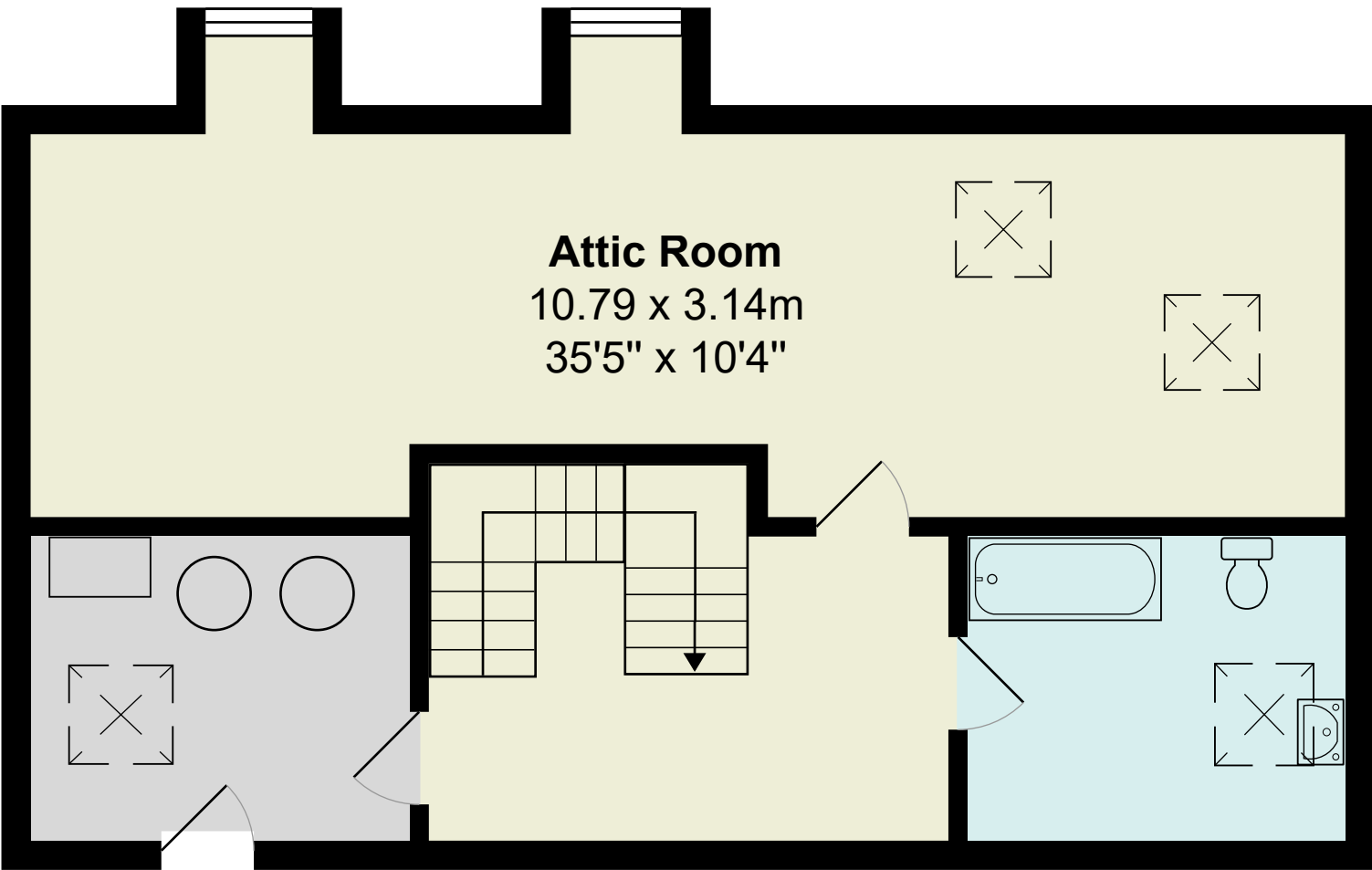
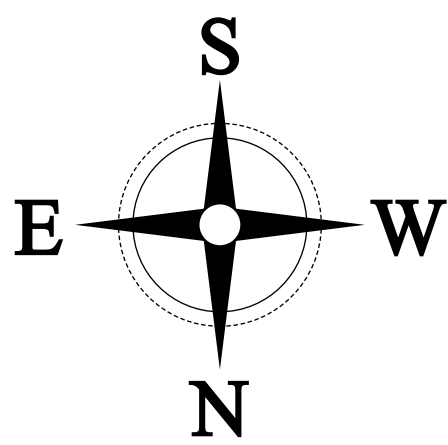
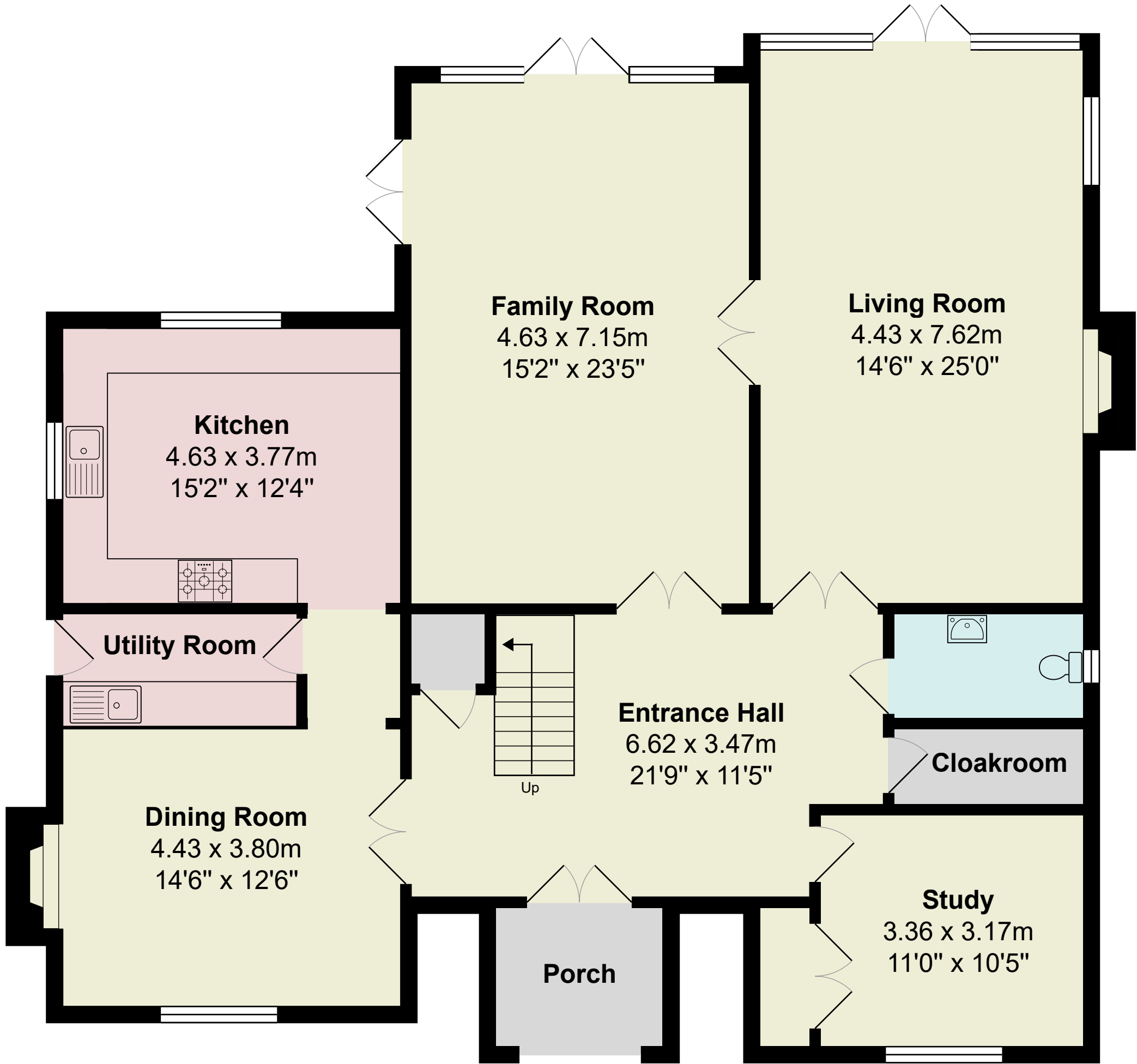


Lutyens House, Dunmow

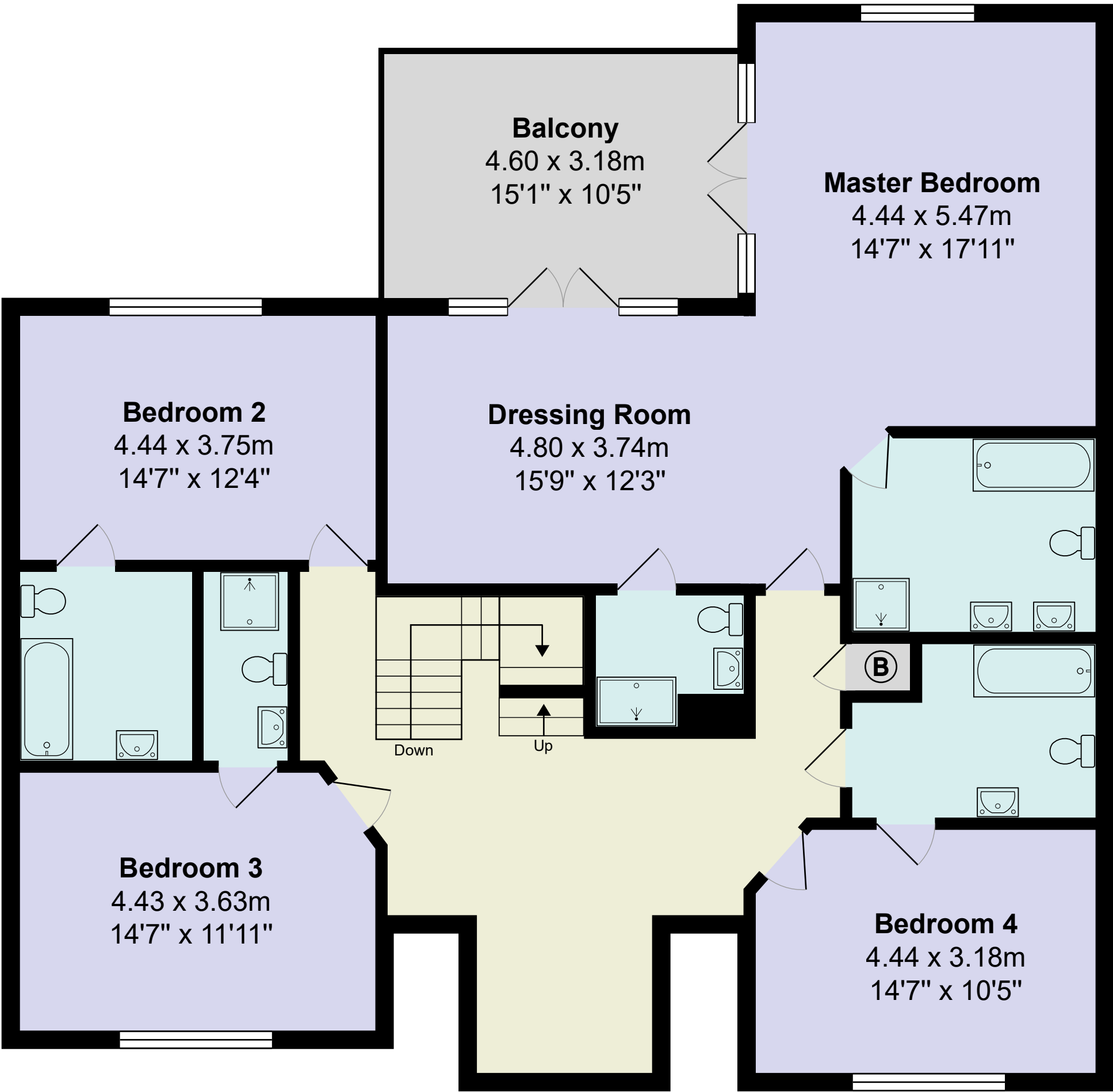
Gross Internal Area (approx.)
381sq m (4095sq ft)



Second Floor



Ground Floor



First Floor

FOR ILLUSTRATIVE PURPOSES ONLY.
Whilst every attempt has been made to ensure the accuracy of the floor plan shown, all measurements, positioning, fixtures, features, fittings and any other data shown are an approximate interpretation for illustrative purposes only. No responsibility is taken for any error, omission, miss-statement or use of data shown.